

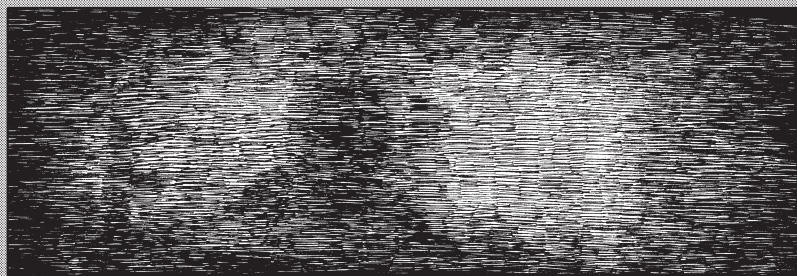
¿SABES UNA
COSA? HINA ME
HA EXPLICADO EL
JUEGO DE LAS
CIEN HISTORIAS
DE MUERTE.

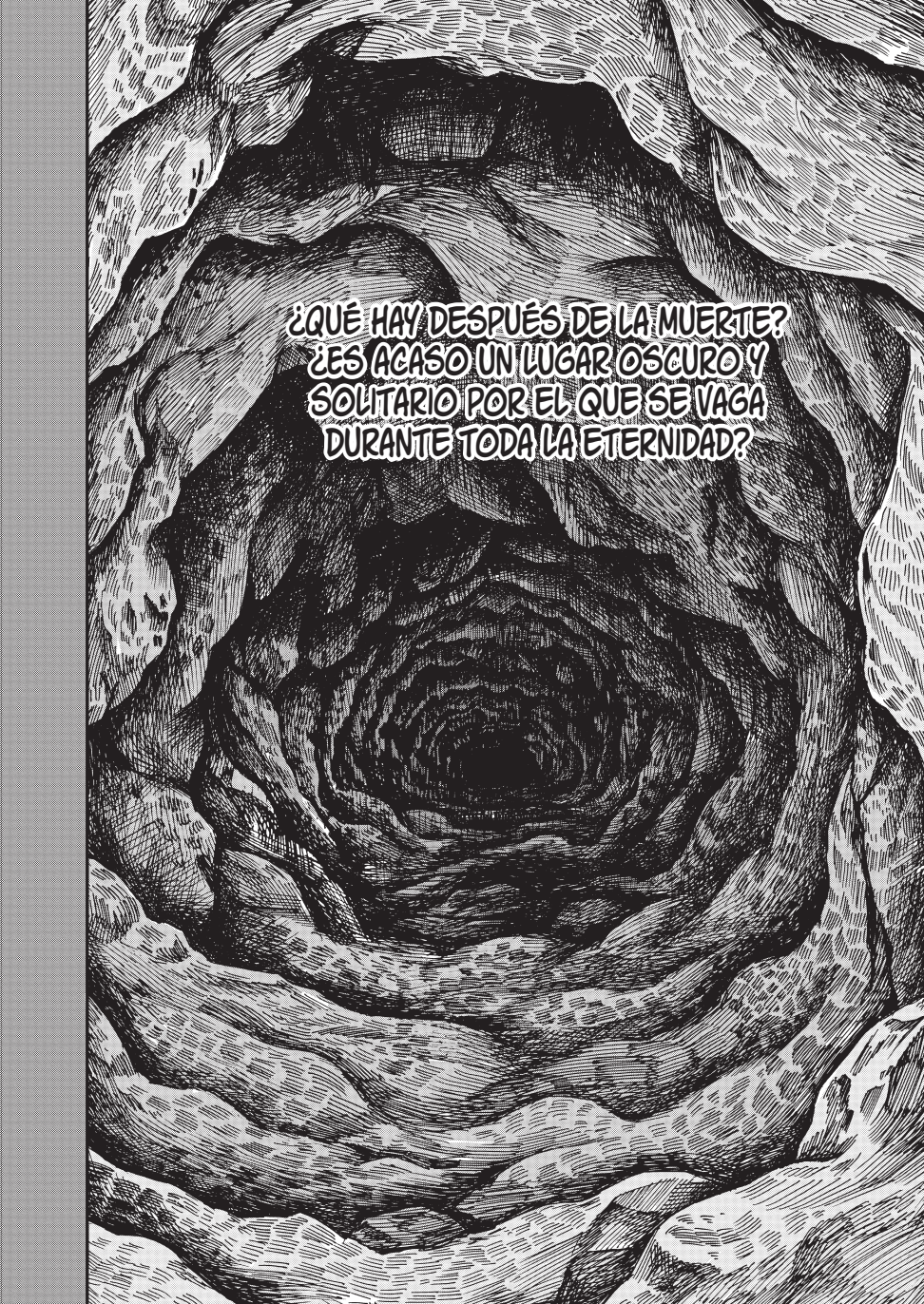


ME HA DICHO
QUE CUANDO
TERMINAS DE
CONTARLAS
TODAS...



...APARECE
UN FANTASMA
DE VERDAD.



A black and white woodcut-style illustration of a dark, cavernous tunnel. The tunnel is formed by rough, layered rock walls that create a sense of depth and perspective, leading towards a dark, circular opening at the end. The lighting is dramatic, with highlights on the rock surfaces and deep shadows in the recesses. On the left wall, a human skull is visible, partially illuminated. The overall mood is somber and mysterious.

**¿QUE HAY DESPUÉS DE LA MUERTE?
¿ES ACASO UN LUGAR OSCURO Y
SOLITARIO POR EL QUE SE VAGA
DURANTE TODA LA ETERNIDAD?**

